

PLEASE CHECK WWW.MOLEX.COM FOR LATEST PART INFORMATION

Part Number: **0355080700**
Status: **Active**
Description: 1.00mm (.039") Diameter Wire-to-Board Receptacle Housing - Single Row

Documents:

[3D Model](#) [Product Specification PS-35354-003 \(PDF\)](#)
[Drawing \(PDF\)](#) [RoHS Certificate of Compliance \(PDF\)](#)

General

Product Family Crimp Housings
 Series 35508
 Product Name N/A

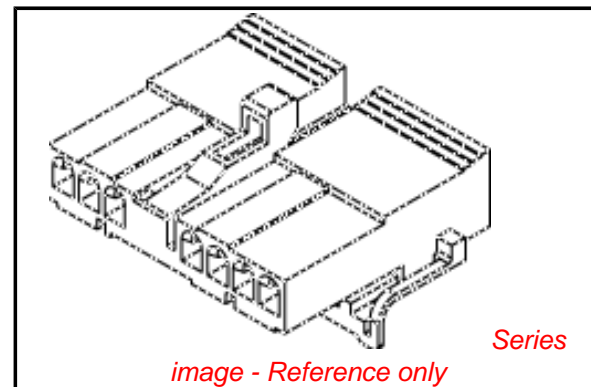
Physical

Circuits (maximum) 7
 Color - Resin Natural
 Gender Female
 Glow-Wire Compliant No
 Material - Resin Polyester
 Number of Rows 1
 Packaging Type Bag
 Panel Mount No
 Pitch - Mating Interface (in) 0.120 In
 Pitch - Mating Interface (mm) 3.00 mm
 Pitch - Term. Interface (in) 0.120 In
 Pitch - Term. Interface (mm) 3.00 mm
 Stackable No
 Temperature Range - Operating -40°C to +120°C

Material Info

Reference - Drawing Numbers

Product Specification PS-35354-003
 Sales Drawing SD-35508-0700



EU RoHS

**ELV and RoHS
Compliant**
REACH SVHC
 Not Reviewed
**Halogen-Free
Status**

China RoHS



**Need more information on product
environmental compliance?**

Email productcompliance@molex.com
 For a multiple part number RoHS Certificate of Compliance, [click here](#)

Please visit the [Contact Us](#) section for any non-product compliance questions.

Search Parts in this Series

35508Series

Mates With

35354

Use With

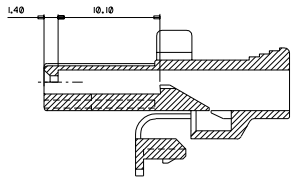
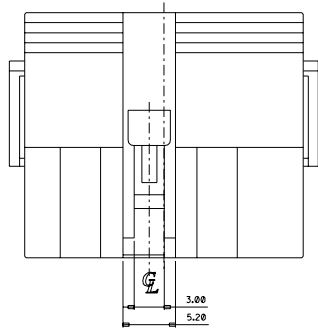
35403

ENG. NO. SD35508-0700

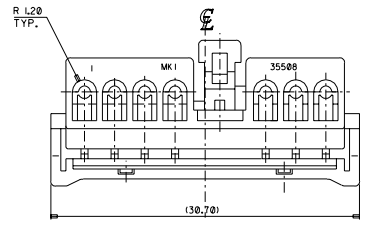
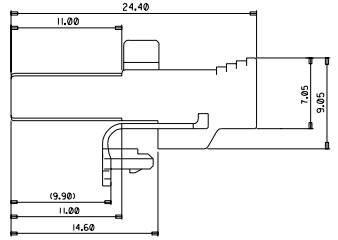
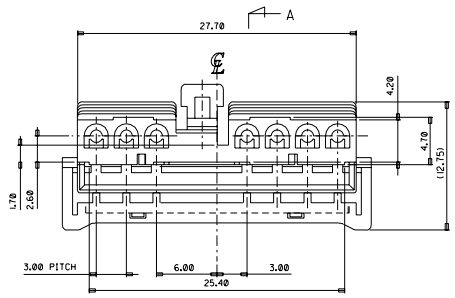
EDP NO.

SIMILAR ITEM

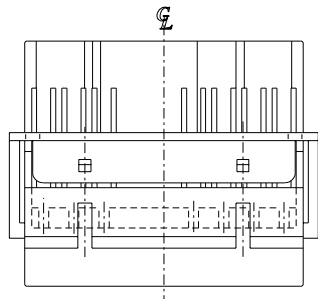
PROJECT NO.



SECTION A-A



A



NOTE
 1. MATERIAL: PBT
 2. APPLICABLE TERMINAL: 35403-1002

				MATERIAL	SEE NOTE	MOLEX-KOREA CO.,LTD.	
				GENERAL TOLERANCE	DIMENSION : ± 0.30	DRAWN BY	CHK'D BY
				ANGLE :	\uparrow	RHO. '96.06.10	
B	REVISED		'97.12.5	DIMENSION CLASSIFICATION		APP'D BY	SCALE 2/1
				∇ : CRITICAL \blacktriangledown : MAJOR () : REFERENCE		TITLE :	
A	NEW RELEASE	96-132	'96.12.2	ASS'Y PART		SHEET 1 OF 1	
LTR	REVISION RECORD	ECN	DATE	DESCRIPTION ENG. NO.		I.0 CIRCLOCK FEMALE HS'G 7P	
REVISE ONLY ON CAD SYSTEM						ENG. NO.	REV B
						SD35508-0700	